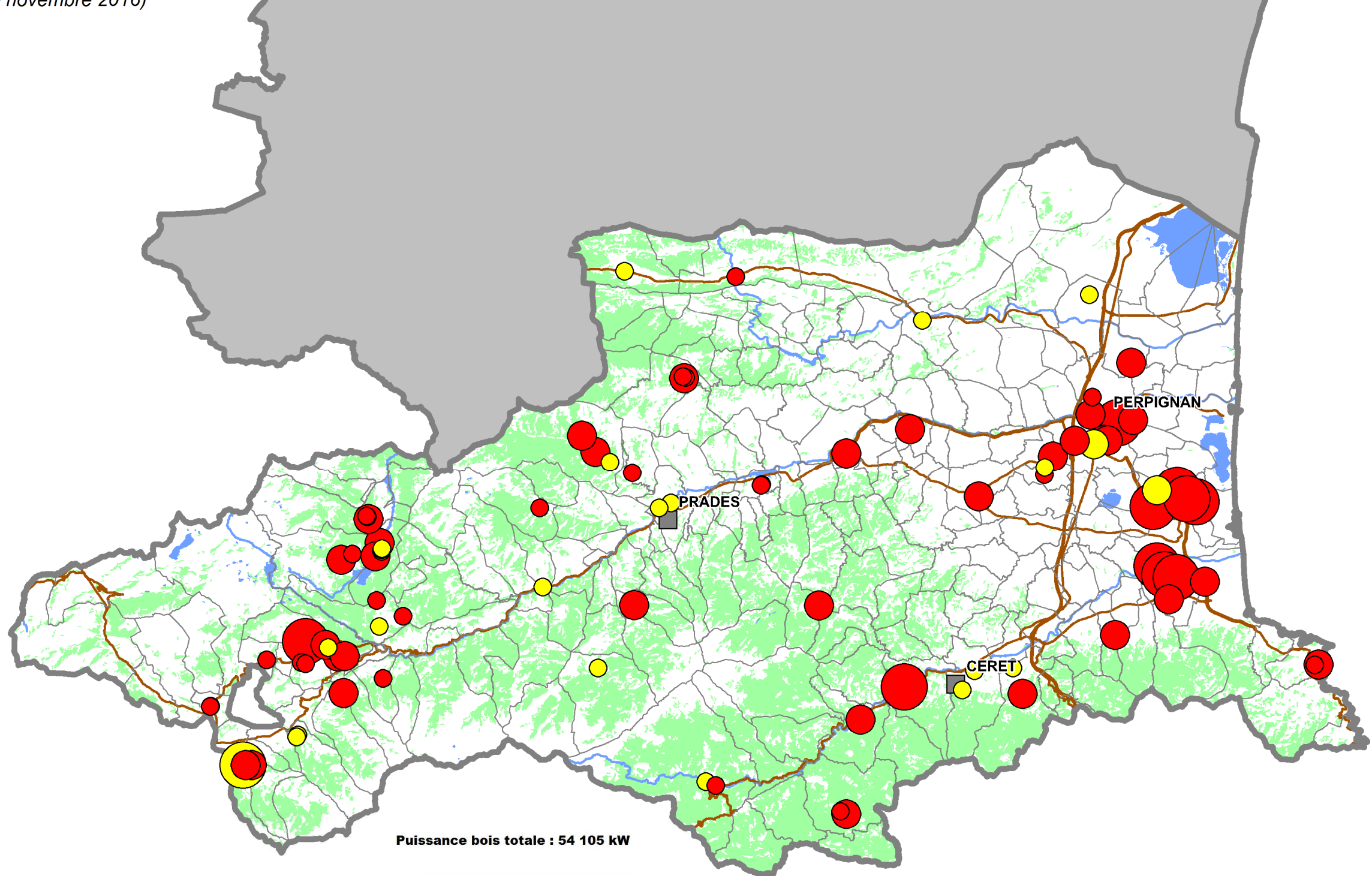


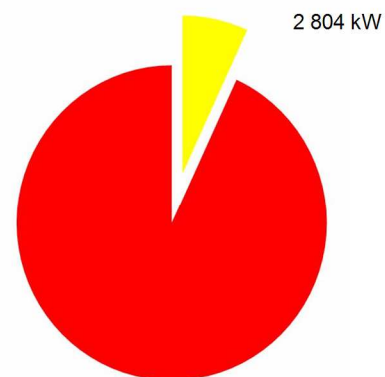
# Chaudières bois automatiques collectives en fonctionnement dans le département des Pyrénées-Orientales

(Au 30 novembre 2016)

LIMOUX

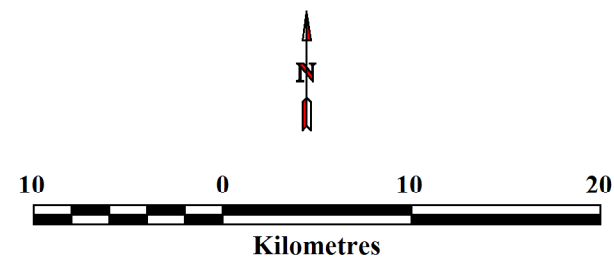


Puissance bois totale : 54 105 kW

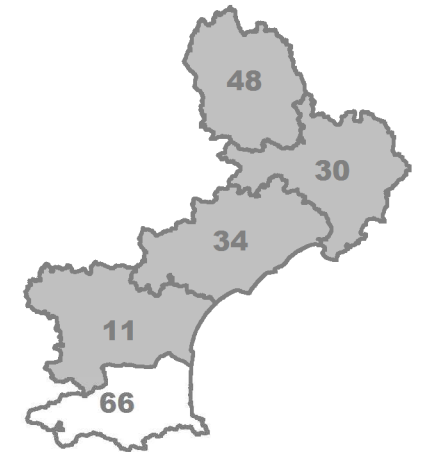


51 301 kW

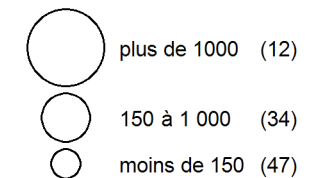
2 804 kW



Sources : BD TOPO IGN  
Réalisation : URCOFOR Languedoc-Roussillon le 02/12/2016



## Puissance bois (en kW)



## Combustible utilisé

